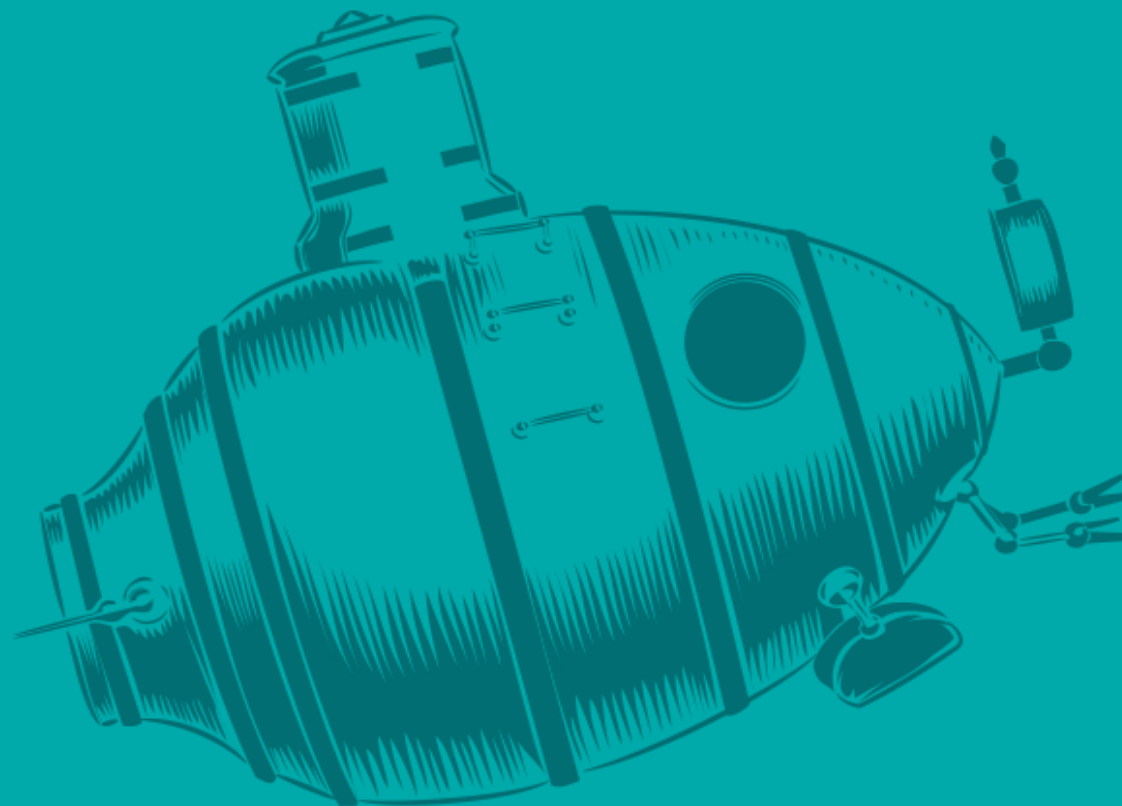




jako několik samostatných řešení

Michal Motyčka
michal.motycka@alef.com





8,5 aplikacije za dopoledne



Jak vypadá ideální aplikace?



**RYCHLÁ A
SVIŽNÁ**



**VŽDY
DOSTUPNÁ**



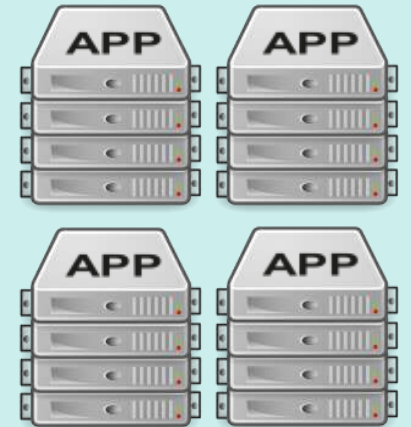
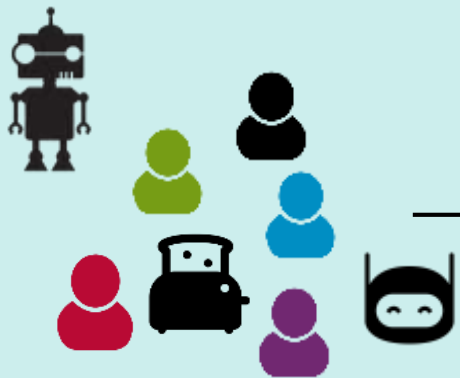
**BOHATÁ
GRAFIKA**



BEZPEČNÁ



PLNÁ FUNKCÍ



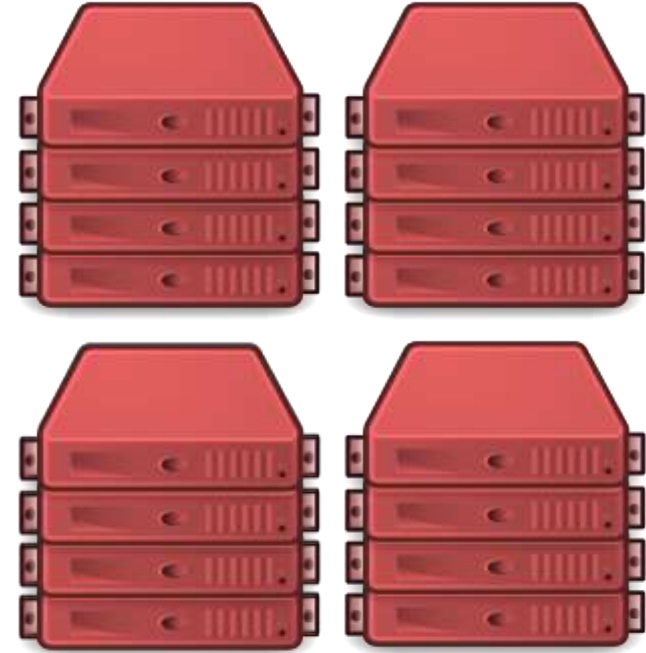
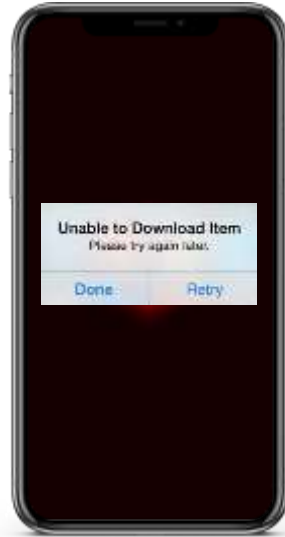
Řešení

Odezva aplikace, vysoká dostupnost





TRAFFIC MANAGEMENT





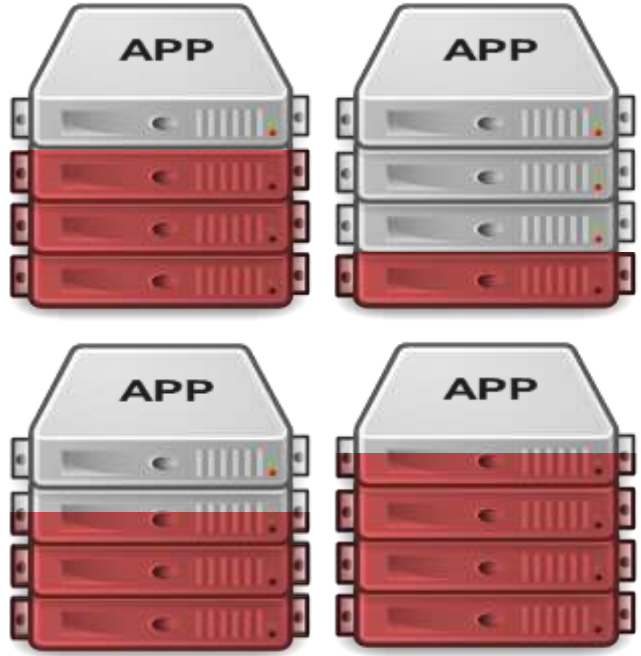
TRAFFIC MANAGEMENT



V čem je tedy problém?

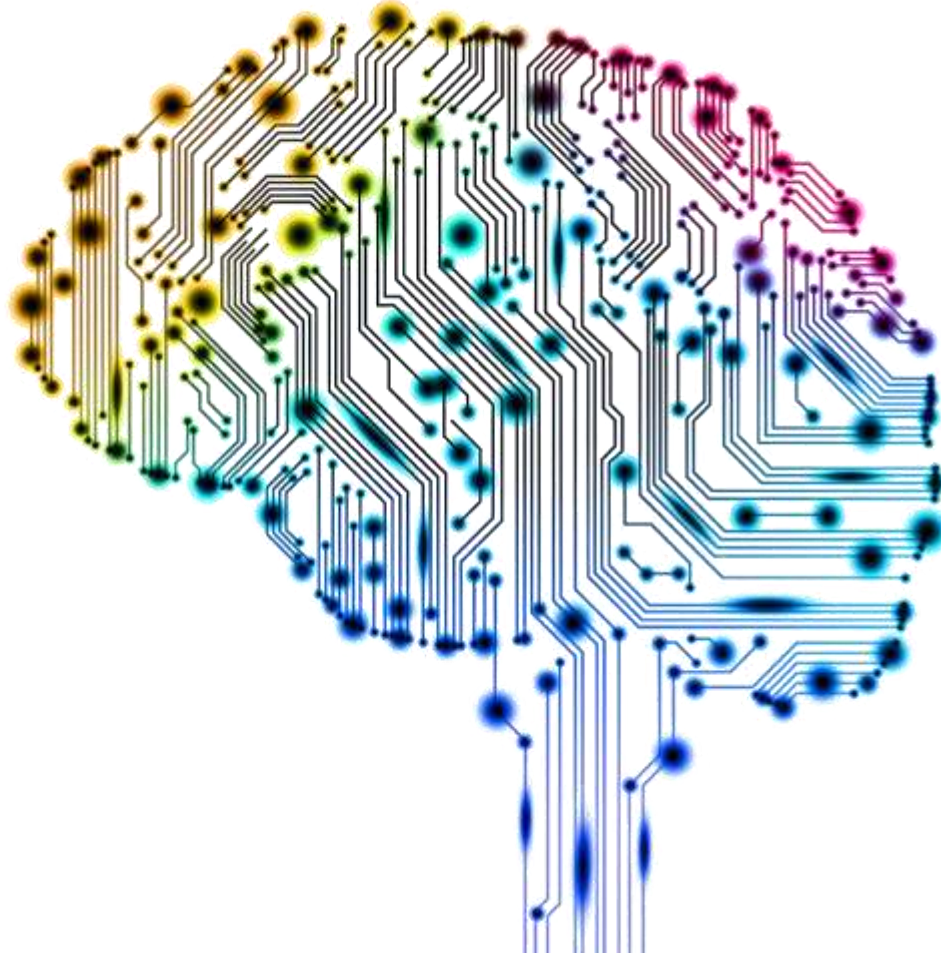


TRAFFIC MANAGEMENT





TRAFFIC MANAGEMENT





**TRAFFIC
MANAGEMENT**



iRules



TRAFFIC MANAGEMENT

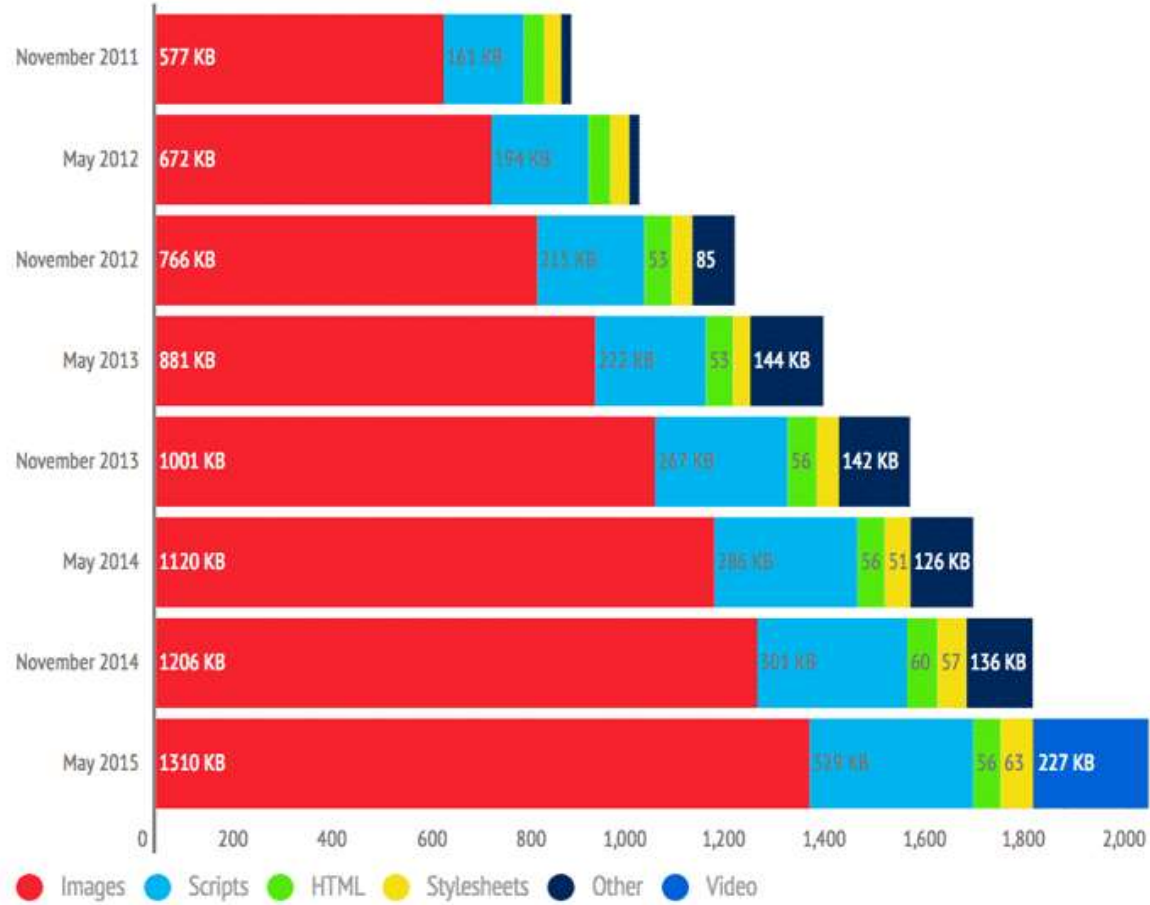


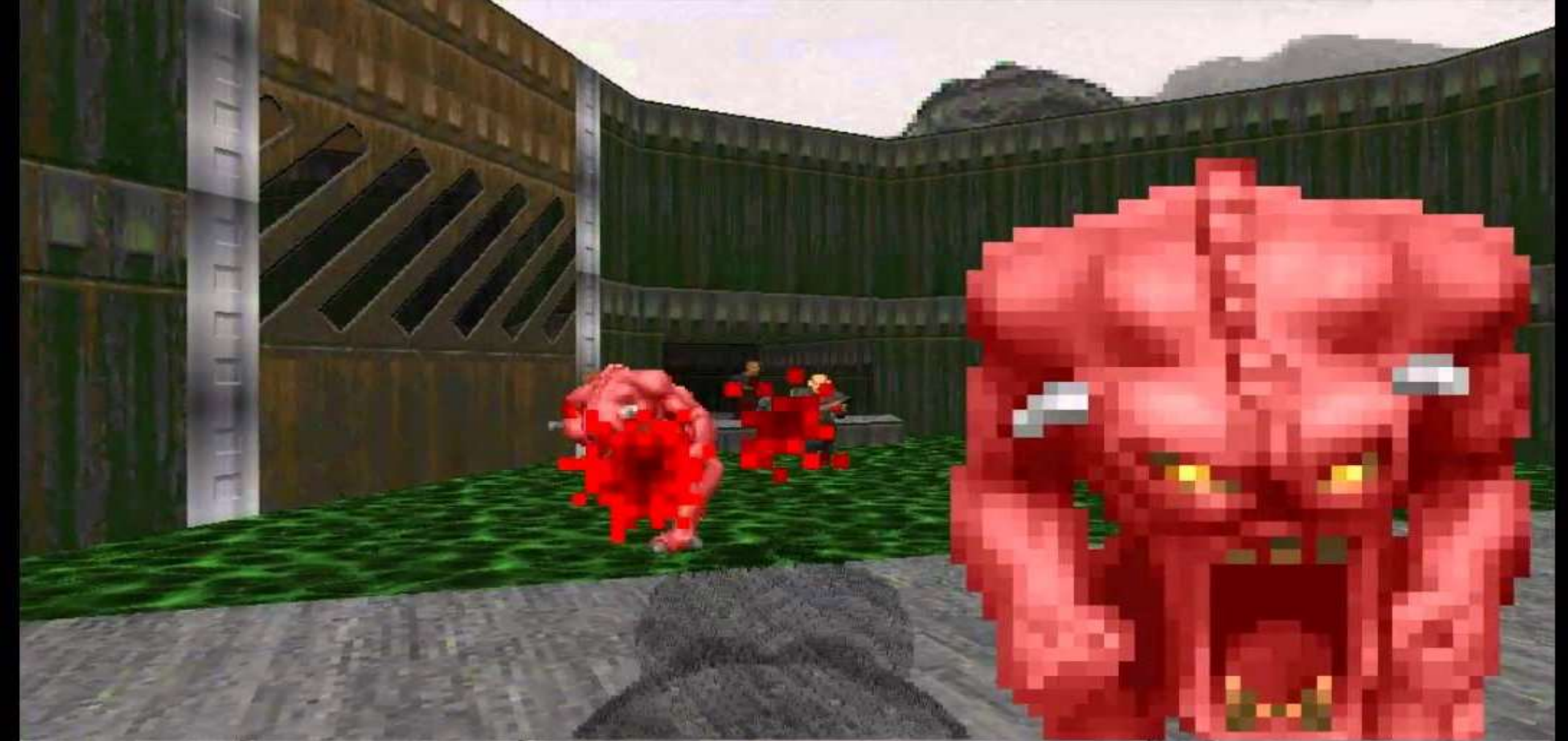
2014





TRAFFIC MANAGEMENT





309

AMMO

93%

HEALTH

2	3	4
5	5	7

ARMS



187%

ARMOR



BULL	309	400
SHEL	100	100
ROKT	15	100
CELL	20	600

Jak to budeme řešit?







TRAFFIC MANAGEMENT

- 40 %

Without Image Optimization



QUALITY: 90
SIZE: 102

Location
Copyright
ISO
Shutter Speed
Exposure Bias
Max Aperture
Focal Plane X Resolution
Focal Plane Y Resolution
Focal Plane Resolution Unit
Custom Rendered
Exposure Mode
Scene Capture Type

Label
Firmware
Flash Compensation
Image Number
Lens
Lens ID
Serial Number
Software
File Size
Dimensions
Camera Make
Camera Model

Camera Date
Digital Date
Modified Date
File Date
Flash
Focal Length
Focal Length in 35mm equiv...
CCD Width
Aperture
F Number
White Balance
Metering Mode

Exposure Program
Thumbnail
JPEG Quality
Tags
Unique ID
X Resolution
Y Resolution
Flash Function Not Present
Flash Mode
Supports Red-Eye Reduction
Flash Return

With Image Optimization



QUALITY: 70
SIZE: 50

Location
File Size
Dimensions

File Date
JPEG Quality
Unique ID

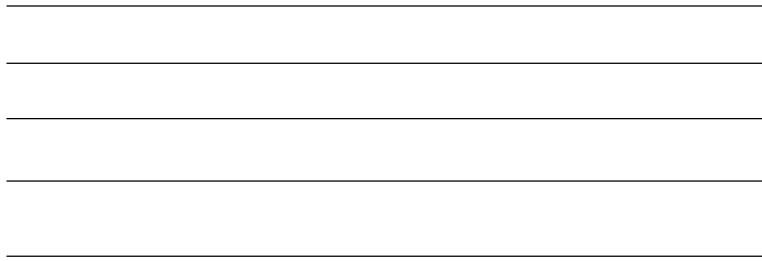


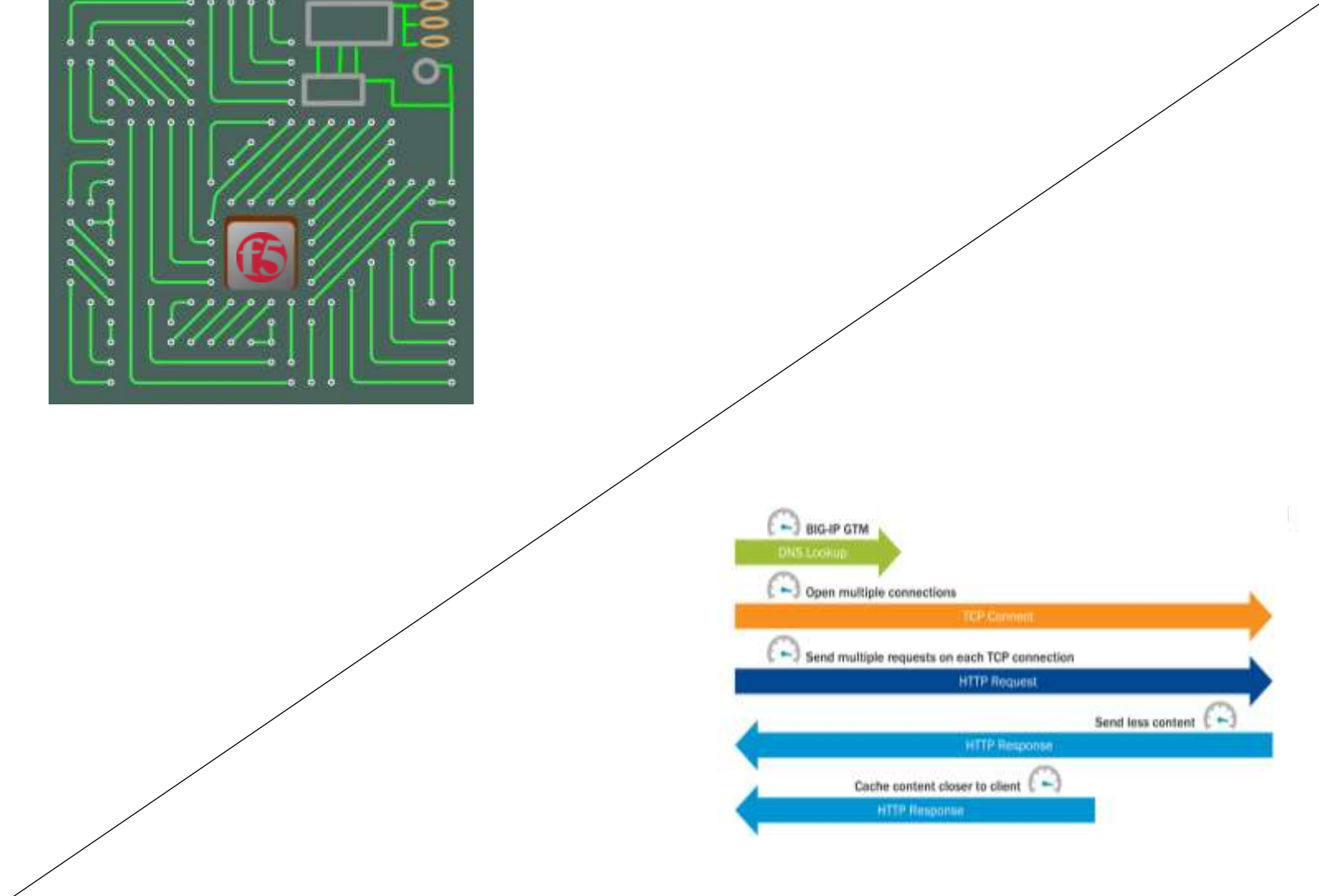
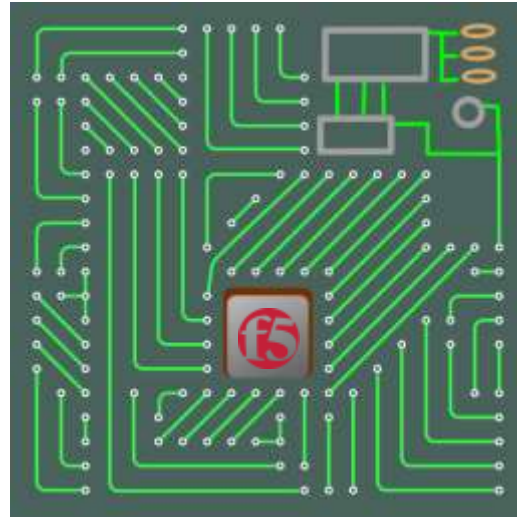
TRAFFIC MANAGEMENT



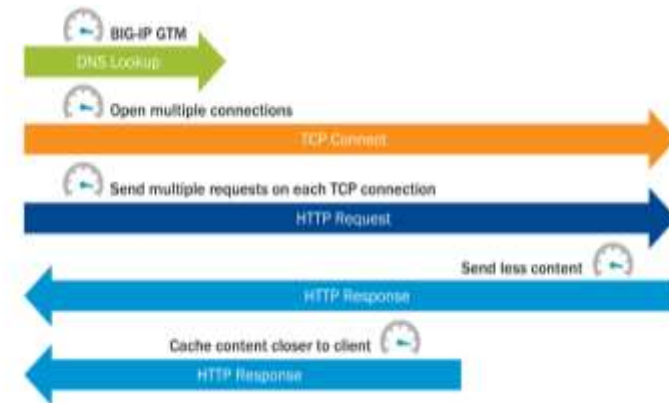


TRAFFIC MANAGEMENT



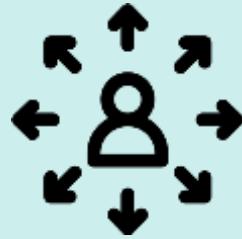


TRAFFIC MANAGEMENT





Zvýšení
hodnoty
současného
HW



Nové možnosti
správy provozu



Úspora/zvýšení
výpočetního
výkonu



Zrychlení
aplikace

LTM



Řešení

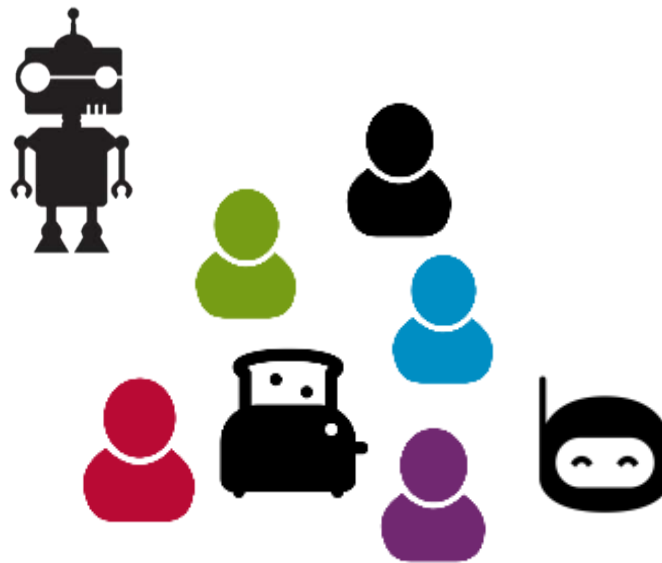
Bezpečná aplikace







SECURITY



1/3

aplikací

72 %

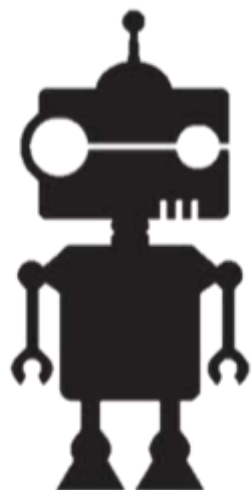
útoků

81 %

útoků



SECURITY



**6 min
< 2 hodiny**



50 %

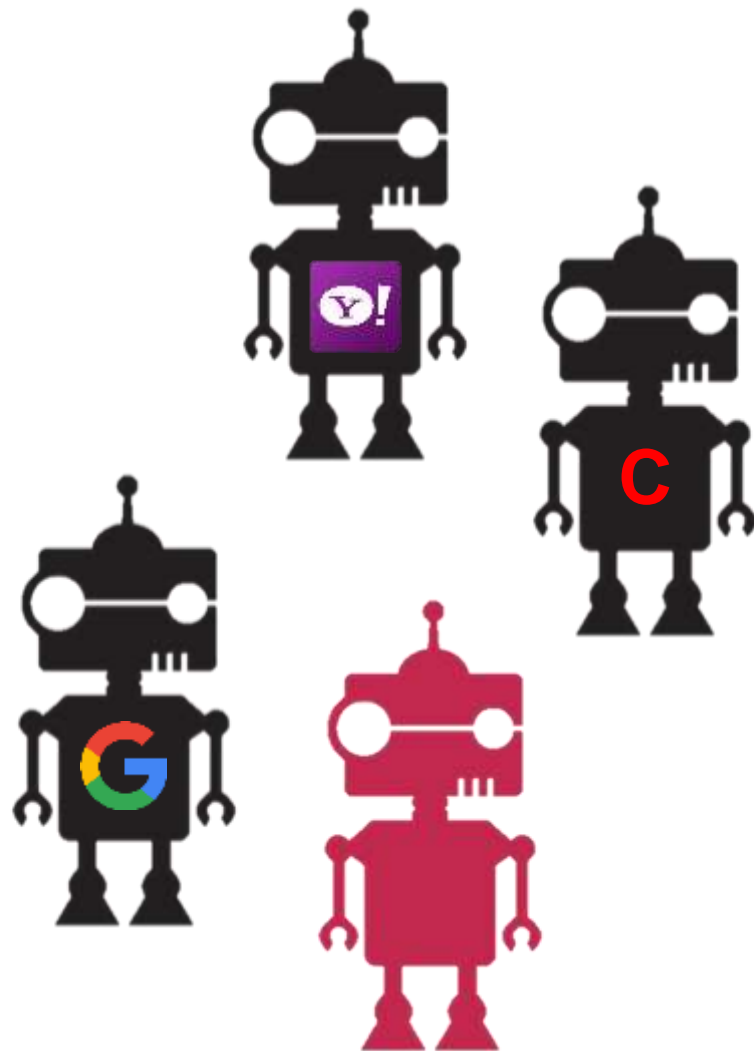


**automatického
provozu**

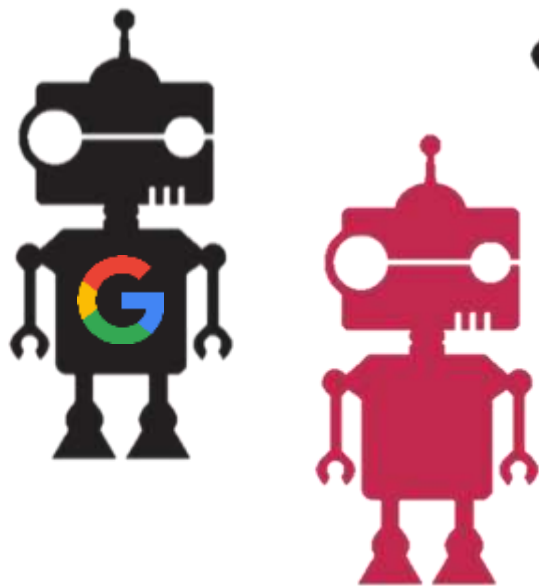
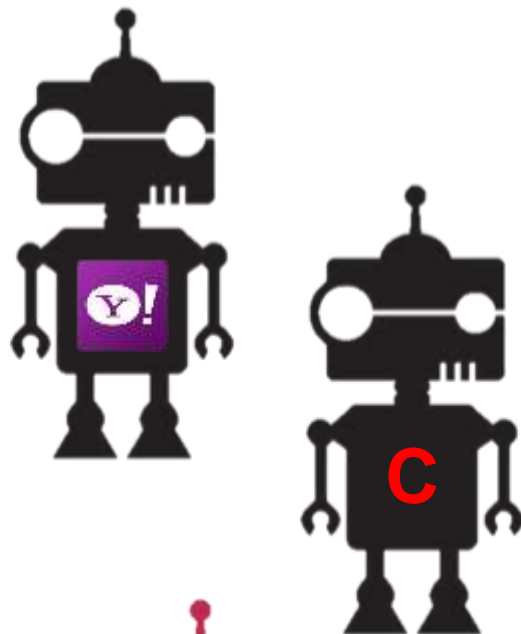
**Proč nejde prostě blokovat komunikaci
všech robotů?**



SECURITY



**Nelze snadno poznat
jejich záměr**



reCAPTCHA



I'm not a robot



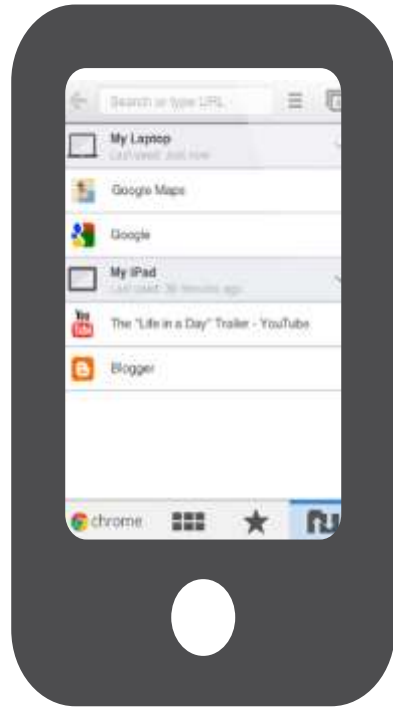
reCAPTCHA
Privacy · Terms



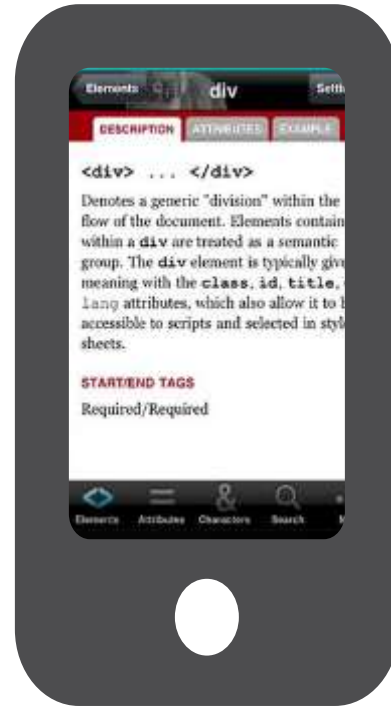
SECURITY



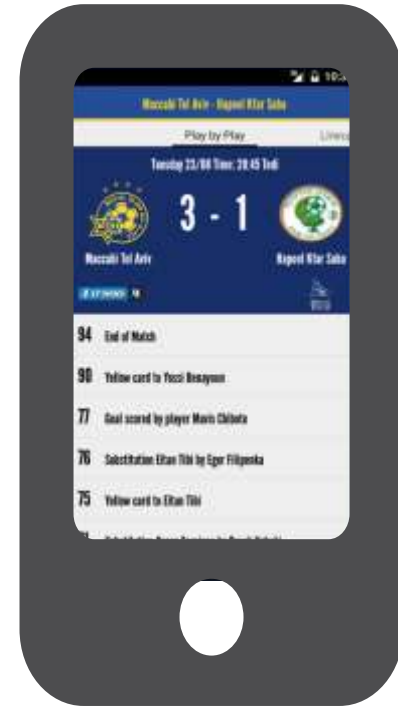
SECURITY



Web



Hybrid



Native



SECURITY



OWASP

Open Web Application
Security Project

OWASP Top 10

#1: Injection

2013 OWASP Top 10

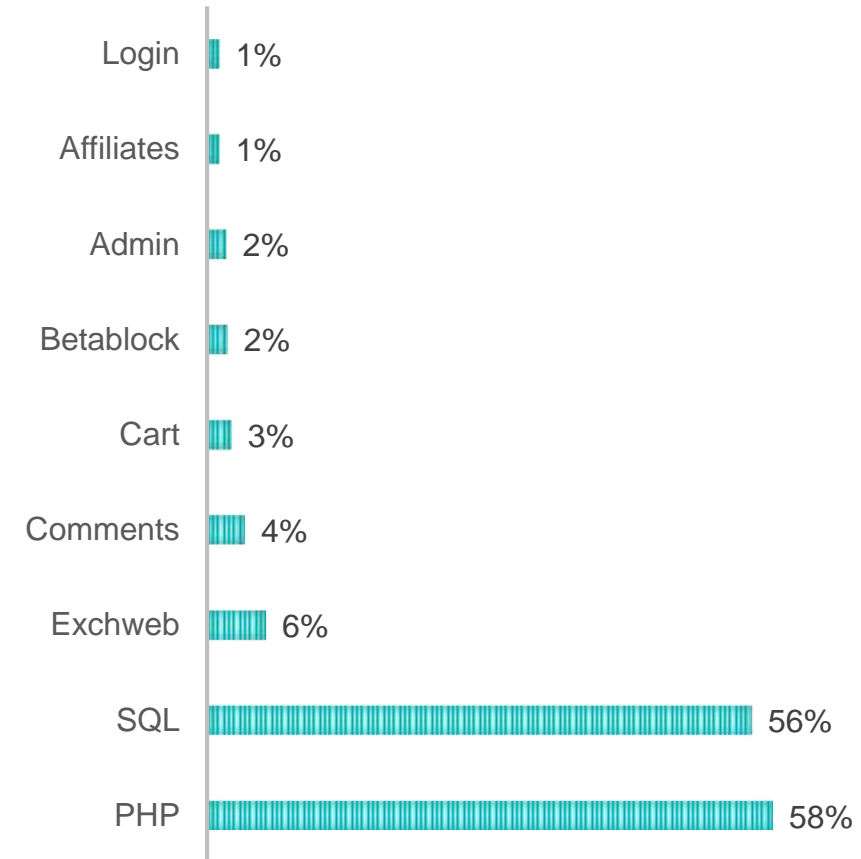
1. **Injection**
2. Broken authentication and session management
3. Cross-site scripting (XSS)
4. Insecure direct object references
5. Security misconfiguration
6. Sensitive data exposure
7. Missing function level access control
8. Cross-site request forgery (CSRF)
9. Using components with known vulnerabilities
10. Unvalidated redirects and forwards

2017 OWASP Top 10

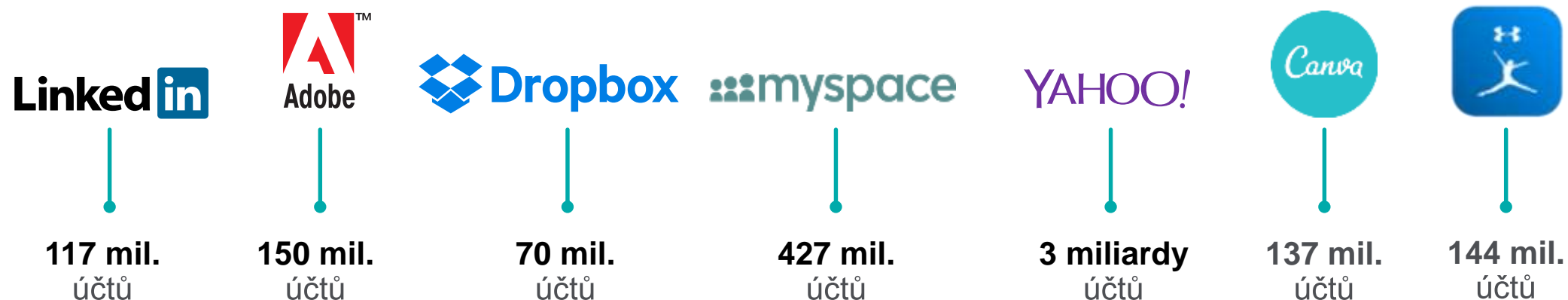
1. **Injection**
2. Broken authentication
3. Sensitive data exposure
4. XML external entities (XXE)
5. Broken access control
6. Security misconfiguration
7. Cross-site scripting (XSS)
8. Insecure deserialization
9. Using components with known vulnerabilities
10. Insufficient logging and monitoring



SECURITY



V posledních 8 letech bylo vyraženo více než 7.1 miliard identit

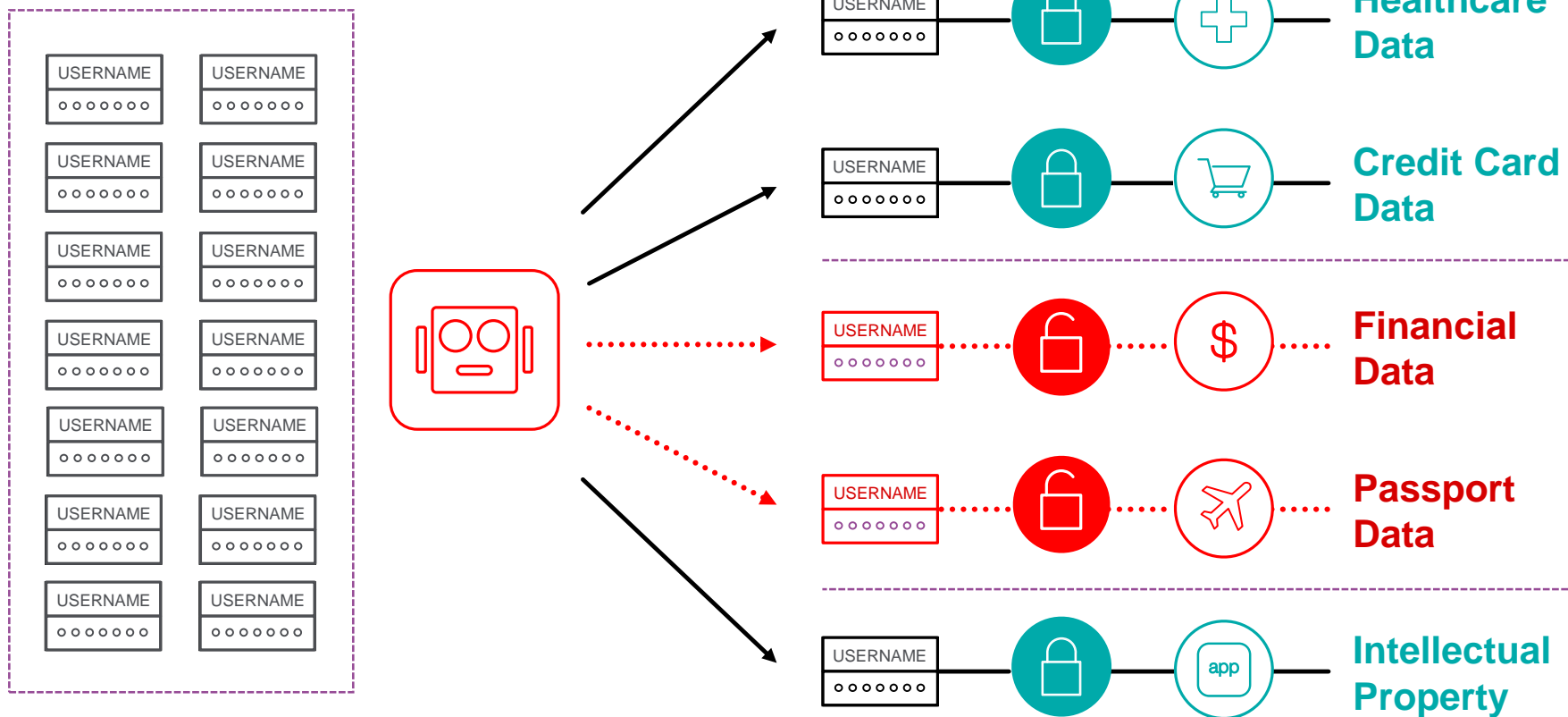


“Téměř **3 ze 4** uživatelů používají jedno heslo na více místech a nezměnili jej 5 a více let ”

K čemu jsou útočníkům takové údaje?



SECURITY



Úspěšnost více než 7 %





SECURITY

aWAF

Behavioral DoS protection



SECURITY





SECURITY

Slowloris



Redukce
provozu o
30 %



Prevence
násilného
zastavení
služby



Neznámé
útoky, OWASP
10



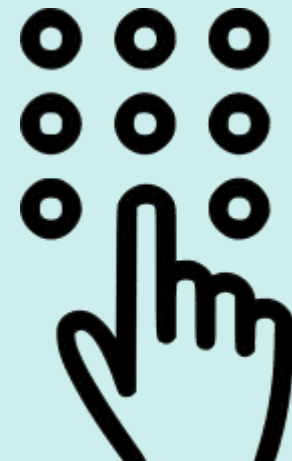
Ochrana
cenných dat

aWAF



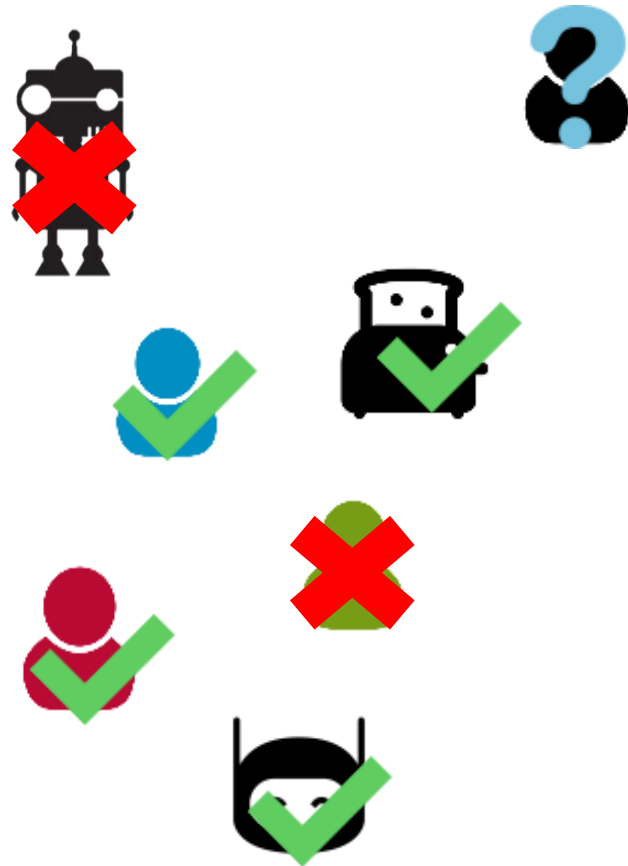
Řešení

Přístup k aplikaci





ACCESS



- Co s novými příchozími?
- Jak zabránit úniku hesel zaměstnanců?
- Jak zvýšit zabezpečení přihlašování?

BYOD



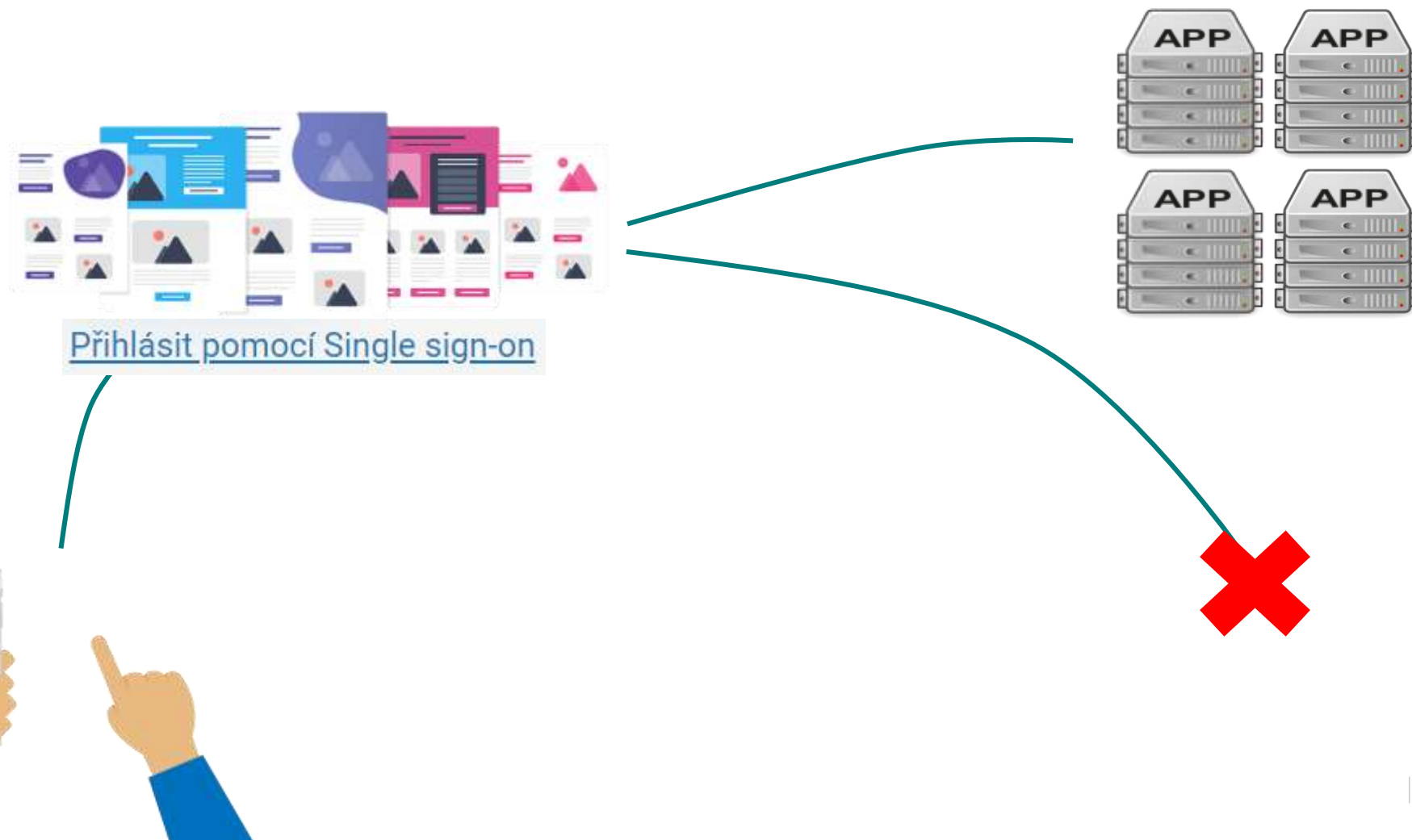
ACCESS



SSO



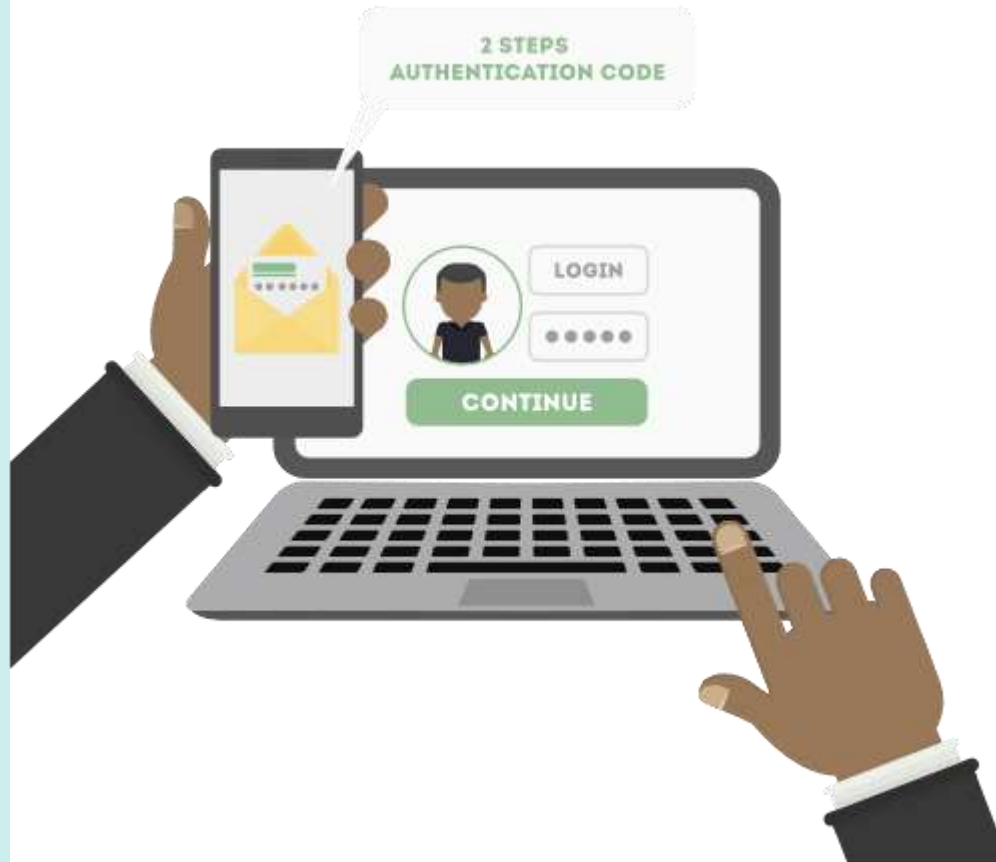
ACCESS



Multifaktorová autentizace



ACCESS





Na pár
kliknutí



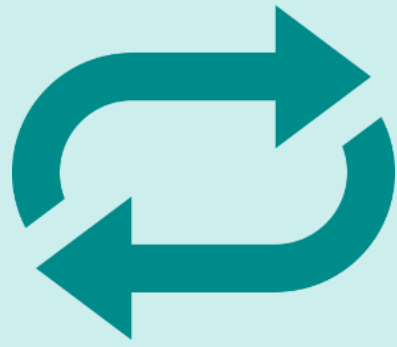
Multifaktorová
autentizace



Bez hesla,
jedním
kliknutím

APM





LTM

Local Traffic Management

aWAF

Advanced Web Application Firewall

APM

Access Policy Manager





Děkuji za pozornost!

